
Efficient management of remote heating systems for your community.

JAG, your partner for warmth.

If you want to automate your local remote heating systems, JAG has the resources to bring your project to fruition.



A common source of heat. Warmth. Happiness. Efficiency.

Since 2010, we have been developing tools for the automation, management, regulation and traceability of remote heating systems.

Your partner

Is your local authority planning to develop a remote heating system? Or have you appointed an engineering firm to manage your local remote heating system? In either case, we have the experience and skills to meet your needs.

Automation

JAG's state-of-the-art automation solutions manage

various controls, storage in the accumulators and distribution of hot water.

To ensure optimal operation of the remote heating system, JAG MES Standard takes over all or part of the visualisation and controls, including those from third-party suppliers. In this way, the entire operational infrastructure is managed centrally, offering optimal control over the key parameters defined by the local authority.

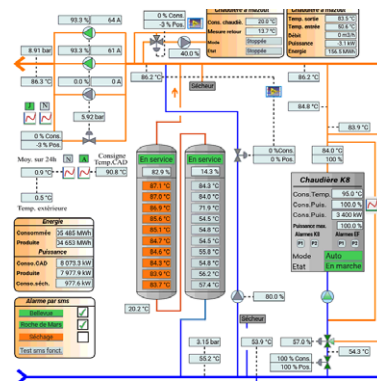
Traceability

Our system ensures traceability through protocols and the recording of values in accordance with the SSIGE. If you need to draw up a report for a third party, you can export the data in Excel format.

If an alarm cannot be dealt with on site, our after-sales service can take control of your installation using remote maintenance. This efficient alarm management considerably reduces the need for technician intervention, which translates into cost savings for our customers.

Benefits at a glance:

- » The installations are «traced» to ensure optimum hot water distribution.
- » Automation guarantees optimum boiler operation, and parameters are checked before programmes are run.
- » Partial solutions as well as the integration of existing installations are easy to implement.
- » Quick implementation thanks to the standards already in place.
- » You can take out a maintenance contract to benefit from 24-hour customer service to ensure that your installations are working properly.



Visualisation of a district heating system with boiler and accumulators

JAG Jakob SA
Roche-de-Mars 12
CH-2900 Porrentruy
T +41 32 374 34 34
jagpt@jag.ch
www.jag.ch

JAG Thermoréseau SRDM

Articles Brandes Clients Graph XY Horloge Modélisation Paramètres Paramètres d'installation

Du 27 Oct 2023 Au 3 Nov 2023

| Accumulateurs/Compteur | Date | Chauffage à distance | | | | |
|---------------------------------------|---------------------|----------------------|----------------------|---------------------------|--------------------|--------------------|
| CAD | Name | Puissance | Puissance pointe CAD | Energie cumulée par heure | Température retour | Température départ |
| | Unit | [kW] | [kW] | [kWh] | [°C] | [°C] |
| Chaudière huile thermique | 27.10.2023 01:00:00 | 2442.0 | 3845.8 | 2707 | 62.4 | |
| Chaudières eau chaudière(bois,mazout) | 27.10.2023 02:00:00 | 2842.5 | 3915.1 | 2697 | 62.8 | |

Visualisation of the monitoring of key values according to SVGW